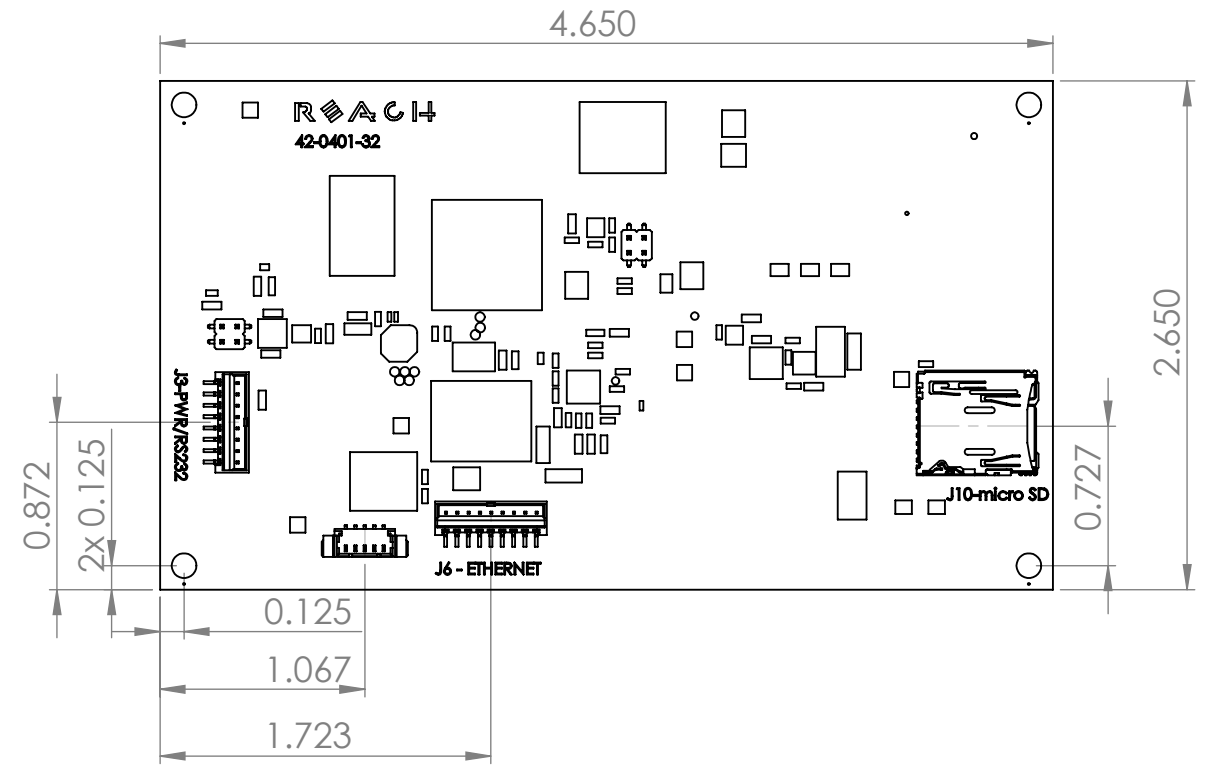


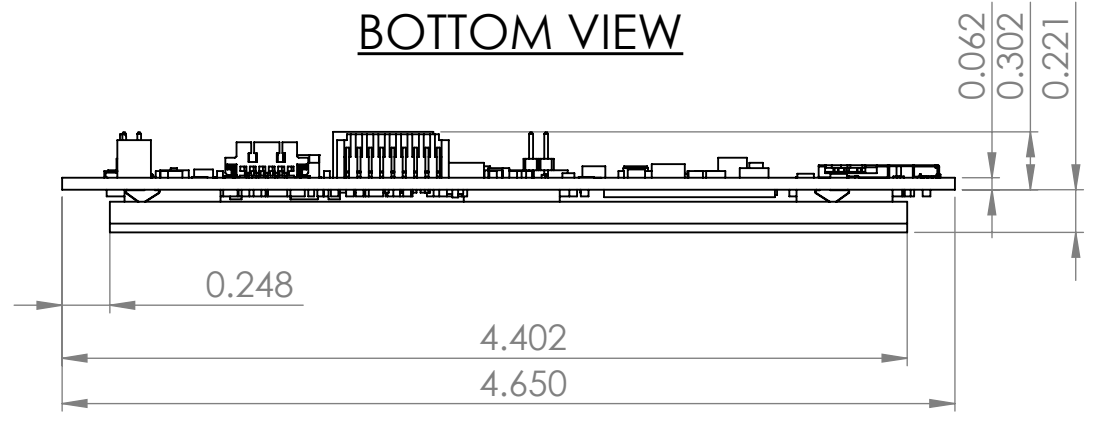
8 7 6 5 4 3 2 1

REVISIONS				
ZONE	REV.	DESCRIPTION	DATE	APPROVED
	A	Initial Release	2/17/2014	

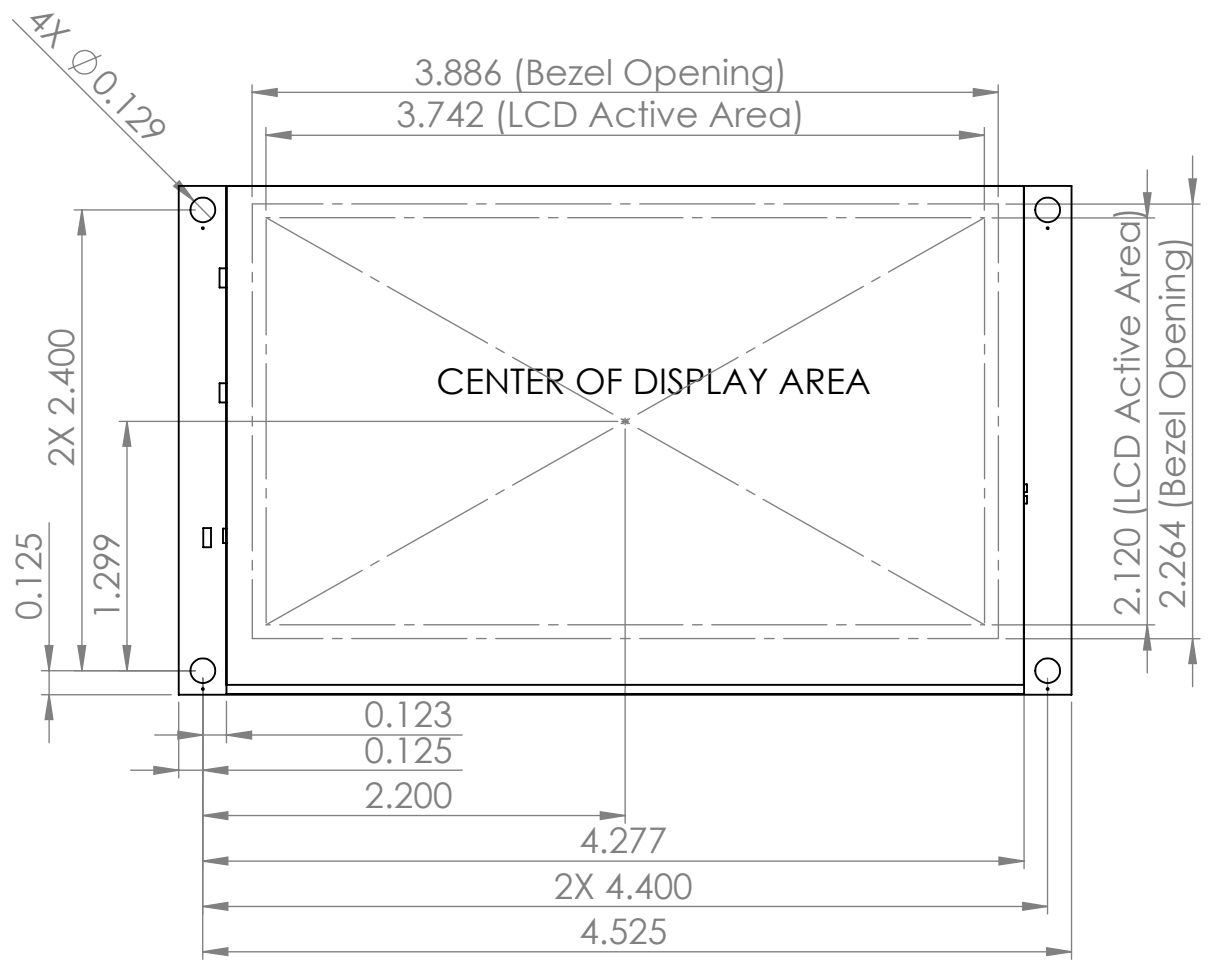
BACK VIEW



BOTTOM VIEW



FRONT VIEW



Note: For recommended gasket placement and panel opening see housing design guide in the 51-0401-52 panel specification.

PROPRIETARY AND CONFIDENTIAL
 THE INFORMATION CONTAINED IN THIS DRAWING IS THE SOLE PROPERTY OF REACH TECHNOLOGY. ANY REPRODUCTION IN PART OR AS A WHOLE WITHOUT THE WRITTEN PERMISSION OF REACH TECHNOLOGY IS PROHIBITED.

		UNLESS OTHERWISE SPECIFIED:		NAME	DATE	REACH TECHNOLOGY INC. TITLE: PRODUCTION MODULE, G2C1L, 4.3" Resistive Touch Dwg No. 51-0401-52 Rev. Edition A.1 Part No. 51-0401-52 Rev A SCALE: 1:1 WEIGHT: SHEET 1 OF 1	
		DIMENSIONS ARE IN INCHES		DRAWN	B. Larson		2/17/15
		TOLERANCES:		CHECKED			
		FRACTIONAL ±		ENG APPR.			
		ANGULAR: MACH ± BEND ±		MFG APPR.			
		TWO PLACE DECIMAL ±		Q.A.			
		THREE PLACE DECIMAL ±		COMMENTS:			
		INTERPRET GEOMETRIC TOLERANCING PER:					
		MATERIAL SEE NOTES					
NEXT ASSY	USED ON	FINISH SEE NOTES					
APPLICATION		DO NOT SCALE DRAWING					

8 7 6 5 4 3 2 1