

---

# SLCD43 Controller Manual V1.24

Hardware Revisions A, B, H01 and H02

06/26/2012

---

© Copyright Reach Technology Inc. 2003-2012  
All Rights Reserved

*Note: the software included with this product is subject to a license agreement as described in this Manual.*

Reach Technology, Inc.

[www.reachtech.com](http://www.reachtech.com)

Sales: 510-770-1417  
[sales@reachtech.com](mailto:sales@reachtech.com)

Technical Support: 503-675-6464  
[techsupport@reachtech.com](mailto:techsupport@reachtech.com)

# Table of Contents

|           |  |           |
|-----------|--|-----------|
| <b>0.</b> | <b>HARDWARE LIMITED WARRANTY AND SOFTWARE LICENSE AGREEMENT .....</b>          | <b>5</b>  |
| 0.1.      | HARDWARE LIMITED WARRANTY .....  | 5         |
| 0.2.      | RETURNS AND REPAIR POLICY .....  | 5         |
| 0.3.      | SOFTWARE LICENSE AGREEMENT .....   | 6         |
| <b>1.</b> | <b>INTRODUCTION.....</b>   | <b>8</b>  |
| 1.1.      | OVERVIEW .....   | 8         |
| 1.2.      | FEATURES .....   | 8         |
| 1.3.      | BOARD PICTURE.....   | 9         |
| 1.4.      | BOARD DIMENSIONAL DRAWING (REVISION H02, H01 AND B).....                       | 10        |
| 1.5.      | SLCD43H BOARD PICTURE.....   | 11        |
| 1.6.      | SLCD43H BOARD DIMENSIONAL DRAWING (REVISION H01).....                          | 12        |
| 1.7.      | SLCD43 BOARD DIMENSIONS .....  | 13        |
| 1.8.      | ELECTRICAL CHARACTERISTICS .....   | 13        |
| 1.9.      | ENVIRONMENTAL.....   | 13        |
| <b>2.</b> | <b>SYSTEM OVERVIEW.....</b>  | <b>14</b> |
| 2.1.      | GENERAL - SLCD43 CONTROLLER .....  | 14        |
| 2.2.      | OVERVIEW - SLCD43 DEVELOPMENT KITS .....                                       | 15        |
| 2.2.1.    | GETTING STARTED.....   | 15        |
| 2.2.2.    | CONNECTING THE KIT TO A PC - SERIAL OR USB .....                               | 15        |
| 2.2.3.    | DEVELOPING THE APPLICATION GUI WITH AN EMBEDDED CONTROLLER AS HOST ....        | 16        |
| 2.3.      | POWERCOM4 BOARD .....  | 18        |
| 2.4.      | POWERCOM4 SCHEMATIC .....  | 19        |
| 2.5.      | POWERCOM4-SLCDX CABLE PINOUTS .....  | 20        |
| 2.6.      | KIT / POWERCOM4 OPERATIONAL NOTES.....   | 21        |
| 2.7.      | LED INDICATORS .....   | 22        |
| <b>3.</b> | <b>CONFIGURATION GUIDE .....</b>   | <b>23</b> |
| 3.1.      | POWER.....   | 23        |
| 3.2.      | SERIAL.....  | 23        |
| 3.3.      | TFT PANEL ORIENTATION.....   | 23        |
| 3.4.      | GROUNDING.....   | 23        |
| <b>4.</b> | <b>CONNECTORS.....</b>   | <b>24</b> |
| 4.1.      | J2 - POWER AND COM0 RS232 COMMUNICATIONS (COM 0 CONNECTOR).....                | 25        |
| 4.2.      | J6 - FLAT FLEX LCD CONNECTOR (LCD CONNECTOR).....                              | 26        |
| 4.3.      | J3 6 USB (USB CONNECTOR).....  | 26        |
| 4.4.      | J1 6 COM1 / PROGRAMMING HEADER (COM 1/PROG CONNECTOR).....                     | 27        |
| 4.5.      | J4 6 PROCESSOR EXPANSION HEADER (COM 2 CONNECTOR) .....                        | 27        |
| 4.6.      | J1 AND J4 ELECTRICAL SPECIFICATIONS .....                                      | 28        |
| <b>5.</b> | <b>SOFTWARE COMMAND REFERENCE.....</b>   | <b>28</b> |
|           | <b>APPENDIX A - PANELS COMPATIBLE WITH THE SLCD43 CONTROLLER.....</b>          | <b>29</b> |
|           | <b>APPENDIX B - PARTS AND SUPPLIERS FOR SLCD43 CONTROLLER CONNECTIONS.....</b> | <b>29</b> |

|  |  |           |
|--|--|-----------|
| B.1  | CONNECTORS AND CABLES FOR J1, J4, J2 .....               | 29        |
| B.2  | DISCRETE WIRE CABLE VENDORS .....                        | 29        |
| <b>APPENDIX C - ORDERING INFORMATION .....</b>                         |  | <b>30</b> |
| C.1  | CONTACT REACH DIRECTLY FOR ORDERING INFORMATION.....     | 30        |
| <b>APPENDIX D - TROUBLESHOOTING .....</b>                              |  | <b>30</b> |
| D.1  | TOUCH UNRELIABLE OR NON-OPERATIVE .....                  | 30        |
| <b>APPENDIX E – 3.3V CMOS UART INTERFACE.....</b>                      |  | <b>31</b> |
| E.1  | COM2 VIA J4. ....  | 31        |
| E.2  | COM0 VIA J2. ....  | 31        |
|  | <i>COM0 Logic Level Mode:</i> .....                      | 31        |
| <b>APPENDIX F – BATTERY OPERATION OPTIONS.....</b>                     |  | <b>32</b> |
| F.1  | RUNNING THE BACKLIGHT DIRECTLY FROM THE BATTERY. ....    | 32        |
| F.2  | RUNNING THE BOARD FROM 3.3V INSTEAD OF 5V. ....          | 33        |
| <b>APPENDIX G – SLCD43 CONTROLLER BOARD PART NUMBER INFORMATION ..</b> |  | <b>34</b> |
| <b>APPENDIX H – SLCD43 DISPLAY MODULE CURRENT DRAW.....</b>            |  | <b>34</b> |
| <b>APPENDIX I – SLCD43 BOARD HISTORY INFORMATION.....</b>              |  | <b>35</b> |
| I.1  | 40-PIN REV H01 BOARD PICTURE (42-0311-01).....           | 35        |
| I.2  | 45-PIN BOARD PICTURE (REV B) .....                       | 36        |
| I.3  | 45-PIN BOARD PICTURE (REV A) .....                       | 37        |
| I.4  | 45-PIN BOARD DIMENSIONAL DRAWING (REV A).....            | 38        |
| I.5  | LEGACY CONNECTORS .....                                  | 39        |
| I.5.1  | J5 6 4 WIRE TOUCH (TOUCH CONNECTOR).....                 | 39        |
| I.5.2  | J6 6 45-PIN FLAT FLEX LCD CONNECTOR (LCD CONNECTOR)..... | 39        |
| I.5.3  | J7 6 LED BACKLIGHT OUTPUT.....                           | 40        |

# Figures

|   |    |
|---|----|
| FIGURE 1: SLCD43 40-PIN REVISION H02 BOARD IMAGE .....        | 9  |
| FIGURE 2: BOARD PHYSICAL DIMENSIONS (INCHES).....             | 10 |
| FIGURE 3: SLCD43H BOARD IMAGE.....                            | 11 |
| FIGURE 4: SLCDH BOARD PHYSICAL DIMENSIONS (INCHES) .....      | 12 |
| FIGURE 5: POWERCOM4 BOARD IMAGE.....                          | 18 |
| FIGURE 6: POWERCOM4 SCHEMATIC.....                            | 19 |
| FIGURE 7: CABLE #23-0101 DIAGRAM .....                        | 20 |
| FIGURE 8: CABLE #23-0064 DIAGRAM .....                        | 20 |
| FIGURE 9: SLCD43 CONNECTOR LOCATIONS (REV H01, H02, B).....   | 24 |
| FIGURE 10: BATTERY POWER DIAGRAM.....                         | 32 |
| FIGURE 11: SLCD43 40-PIN REVISION H01 BOARD IMAGE .....       | 35 |
| FIGURE 12: SLCD43 45-PIN REVISION B BOARD IMAGE .....         | 36 |
| FIGURE 13: SLCD43 45-PIN REVISION A BOARD IMAGE .....         | 37 |
| FIGURE 14: REVISION A BOARD PHYSICAL DIMENSIONS (INCHES)..... | 38 |

## **0. Hardware Limited Warranty and Software License Agreement**

### **0.1. *Hardware Limited Warranty***

REACH TECHNOLOGY, Inc. warrants its hardware products to be free from manufacturing defects in materials and workmanship under normal use for a period of one (1) year from the date of purchase from REACH. This warranty extends to products purchased directly from REACH or an authorized REACH distributor. Purchasers should inquire of the distributor regarding the nature and extent of the distributor's warranty, if any. REACH shall not be liable to honor the terms of this warranty if the product has been used in any application other than that for which it was intended, or if it has been subjected to misuse, accidental damage, modification, or improper installation procedures. Furthermore, this warranty does not cover any product that has had the serial number altered, defaced, or removed. This warranty shall be the sole and exclusive remedy to the original purchaser. In no event shall REACH be liable for incidental or consequential damages of any kind (property or economic damages inclusive) arising from the sale or use of this equipment. REACH is not liable for any claim made by a third party or made by the purchaser for a third party. REACH shall, at its option, repair or replace any product found defective, without charge for parts or labor. Repaired or replaced equipment and parts supplied under this warranty shall be covered only by the unexpired portion of the warranty. Except as expressly set forth in this warranty, REACH makes no other warranties, expressed or implied, nor authorizes any other party to offer any warranty, including any implied warranties of merchantability or fitness for a particular purpose. Any implied warranties that may be imposed by law are limited to the terms of this limited warranty. This warranty statement supercedes all previous warranties, and covers only the Reach hardware. The unit's software is covered by a separate license agreement.

### **0.2. *Returns and Repair Policy***

No merchandise may be returned for credit, exchange, or service without prior authorization from REACH. To obtain warranty service, contact the factory and request an RMA (Return Merchandise Authorization) number. Enclose a note specifying the nature of the problem, name and phone number of contact person, RMA number, and return address.

Authorized returns must be shipped freight prepaid to Reach Technology Inc. 4575 Cushing Parkway, Fremont, California 94538 with the RMA number clearly marked on the outside of all cartons. Shipments arriving freight collect or without an RMA number shall be subject to refusal. REACH reserves the right in its sole and absolute discretion to charge a 15% restocking fee, plus shipping costs, on any products returned with an RMA.

Return freight charges following repair of items under warranty shall be paid by REACH, shipping by standard ground carrier. In the event repairs are found to be non-warranty, return freight costs shall be paid by the purchaser.

### **0.3. Software License Agreement**

PLEASE READ THIS SOFTWARE LICENSE AGREEMENT CAREFULLY BEFORE DOWNLOADING OR USING THE SOFTWARE.

This License Agreement (the "Agreement") is a legal contract between you (either an individual or a single business entity) and Reach Technology Inc. (the "Reach") for software referenced in this guide, which includes computer software and, as applicable, associated media, printed materials, and online or electronic documentation (the "Software").

BY INSTALLING, COPYING, OR OTHERWISE USING THE SOFTWARE, YOU AGREE TO BE BOUND BY THE TERMS OF THIS AGREEMENT. IF YOU DO NOT AGREE TO THE TERMS OF THIS AGREEMENT, DO NOT INSTALL OR USE THE SOFTWARE. IF YOU HAVE PAID A FEE FOR THIS LICENSE AND DO NOT ACCEPT THE TERMS OF THIS AGREEMENT, REACH WILL REFUND THE FEE TO YOU PROVIDED YOU (1) DO NOT INSTALL THE SOFTWARE AND (2) RETURN ALL SOFTWARE, MEDIA AND OTHER DOCUMENTATION AND MATERIALS PROVIDED WITH THE SOFTWARE TO REACH TECHNOLOGY INC AT: REACH TECHNOLOGY INC., 4575 CUSHING PARKWAY, FREMONT, CALIFORNIA 94538.

Reach Technology Inc. ("Reach") and its suppliers grant to Customer ("Customer") a nonexclusive and nontransferable license to use the Reach software ("Software") in object code form on one or more central processing units owned or leased by Customer or otherwise embedded in equipment provided by Reach.

EXCEPT AS EXPRESSLY AUTHORIZED ABOVE, CUSTOMER SHALL NOT: COPY, IN WHOLE OR IN PART, SOFTWARE OR DOCUMENTATION; MODIFY THE SOFTWARE; REVERSE COMPILE OR REVERSE ASSEMBLE ALL OR ANY PORTION OF THE SOFTWARE; OR RENT, LEASE, DISTRIBUTE, SELL, OR CREATE DERIVATIVE WORKS OF THE SOFTWARE.

Customer agrees that aspects of the licensed materials, including the specific design and structure of individual programs, constitute trade secrets and/or copyrighted material of Reach. Customer agrees not to disclose, provide, or otherwise make available such trade secrets or copyrighted material in any form to any third party without the prior written consent of Reach. Customer agrees to implement reasonable security measures to protect such trade secrets and copyrighted material. Title to Software and documentation shall remain solely with Reach.

**SOFTWARE LIMITED WARRANTY.** Reach warrants that for a period of ninety (90) days from the date of shipment from Reach: (i) the media on which the Software is furnished will be free of defects in materials and workmanship under normal use; and (ii) the Software substantially conforms to its published specifications. Except for the foregoing, the Software is provided AS IS. This limited warranty extends only to Customer as the original licensee. Customer's exclusive remedy and the entire liability of Reach and its suppliers under this limited warranty will be, at Reach's option, repair, replacement, or refund of the Software. In no event does Reach warrant that the Software is error free or that Customer will be able to operate the Software without problems or interruptions.

This warranty does not apply if the software (a) has been altered, except by Reach, (b) has not been installed, operated, repaired, or maintained in accordance with instructions supplied by Reach, (c) has been subjected to abnormal physical or electrical stress, misuse, negligence, or accident, or (d) is used in ultrahazardous activities.

**DISCLAIMER.** EXCEPT AS SPECIFIED IN THIS WARRANTY, ALL EXPRESS OR IMPLIED CONDITIONS, REPRESENTATIONS, AND WARRANTIES INCLUDING, WITHOUT LIMITATION, ANY IMPLIED WARRANTY OF MERCHANTABILITY, FITNESS FOR A PARTICULAR PURPOSE, NONINFRINGEMENT OR ARISING FROM A COURSE OF DEALING, USAGE, OR TRADE PRACTICE, ARE HEREBY EXCLUDED TO THE EXTENT ALLOWED BY APPLICABLE LAW.

IN NO EVENT WILL REACH OR ITS SUPPLIERS BE LIABLE FOR ANY LOST REVENUE, ROFIT, OR DATA, OR FOR SPECIAL, INDIRECT, CONSEQUENTIAL, INCIDENTAL, OR PUNITIVE DAMAGES HOWEVER CAUSED AND REGARDLESS OF THE THEORY OF LIABILITY ARISING OUT OF THE USE OF OR INABILITY TO USE THE SOFTWARE EVEN IF REACH OR ITS SUPPLIERS HAVE BEEN ADVISED OF THE POSSIBILITY OF SUCH DAMAGES.

In no event shall Reach's or its suppliers' liability to Customer, whether in contract, tort (including negligence), or otherwise, exceed the price paid by Customer. The foregoing limitations shall apply even if the above-stated warranty fails of its essential purpose. SOME STATES DO NOT ALLOW LIMITATION OR EXCLUSION OF LIABILITY FOR CONSEQUENTIAL OR INCIDENTAL DAMAGES.

The above warranty DOES NOT apply to any beta software, any software made available for testing or demonstration purposes, any temporary software modules or any software for which Reach does not receive a license fee. All such software products are provided AS IS without any warranty whatsoever.

This License is effective until terminated. Customer may terminate this License at any time by destroying all copies of Software including any documentation. This License will terminate immediately without notice from Reach if Customer fails to comply with any provision of this License. Upon termination, Customer must destroy all copies of Software.

Software, including technical data, is subject to U.S. export control laws, including the U.S. Export Administration Act and its associated regulations, and may be subject to export or import regulations in other countries. Customer agrees to comply strictly with all such regulations and acknowledges that it has the responsibility to obtain licenses to export, re-export, or import Software.

This License shall be governed by and construed in accordance with the laws of the State of California, United States of America, as if performed wholly within the state and without giving effect to the principles of conflict of law. If any portion hereof is found to be void or unenforceable, the remaining provisions of this License shall remain in full force and effect. This License constitutes the entire License between the parties with respect to the use of the Software.

# 1. Introduction

## 1.1. Overview

The SLCD43 controller provides complete Graphical User Interface for embedded systems. It was designed to work with specific 4.3 inch LCD TFT panels. Using the SLCD family of controllers is simply the quickest way to generate a user interface without a lot of graphical programming. It has a small size to fit in space-constrained applications.

## 1.2. Features

- ◆ Fits exact footprint of many popular 4.3 inch LCD panels
- ◆ Touch controller (4 wire resistive) on board
- ◆ Beeper for audible touch feedback and alarms
- ◆ On-board LED Backlight driver
- ◆ RS232 / 3.3V CMOS up to 230,400 baud or USB level interface up to 460,800 baud
- ◆ User downloadable bitmaps with RLE compression (4Mb of flash memory)
- ◆ Backlight enable and wide range brightness control
- ◆ Low cost
- ◆ Firmware is field-reprogrammable
- ◆ Supports either landscape or portrait mode display (firmware option)
- ◆ Can be powered from USB (board plus panel)
- ◆ Can be modified for specific OEM requirements
- ◆ RoHS Compliant as of Jan 1, 2008



### 1.3. Board Picture

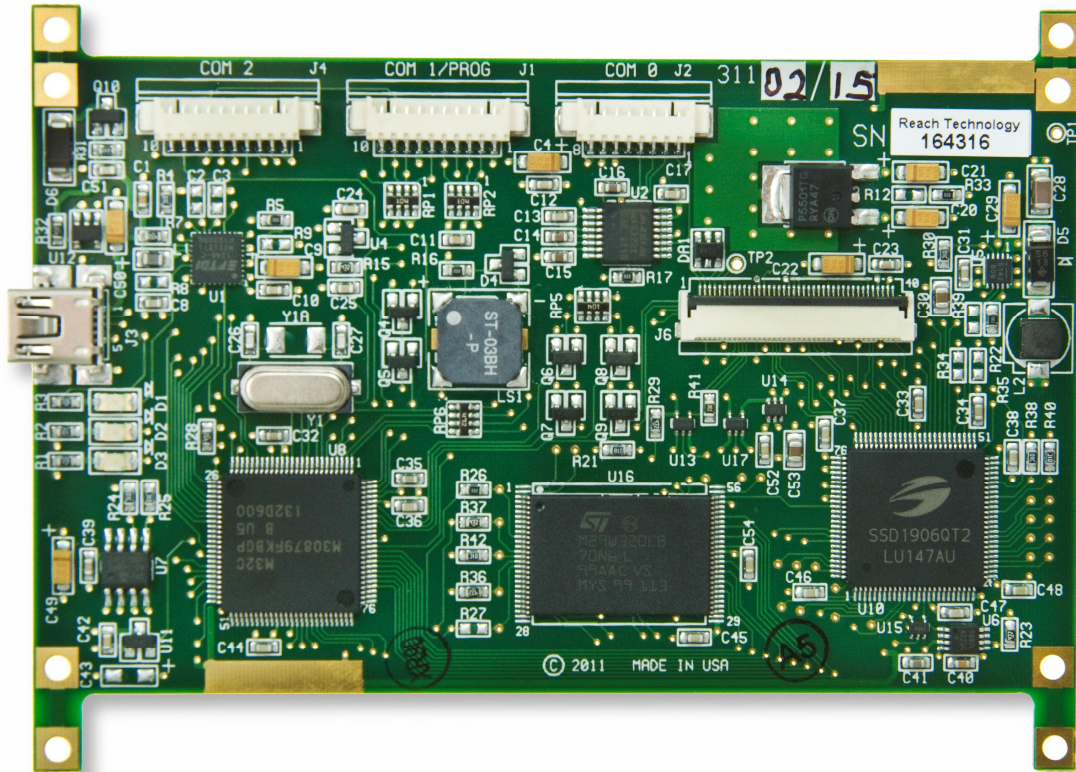


Figure 1: SLCD43 40-pin Revision H02 Board Image

1.4. Board Dimensional Drawing (Revision H02, H01 and B)

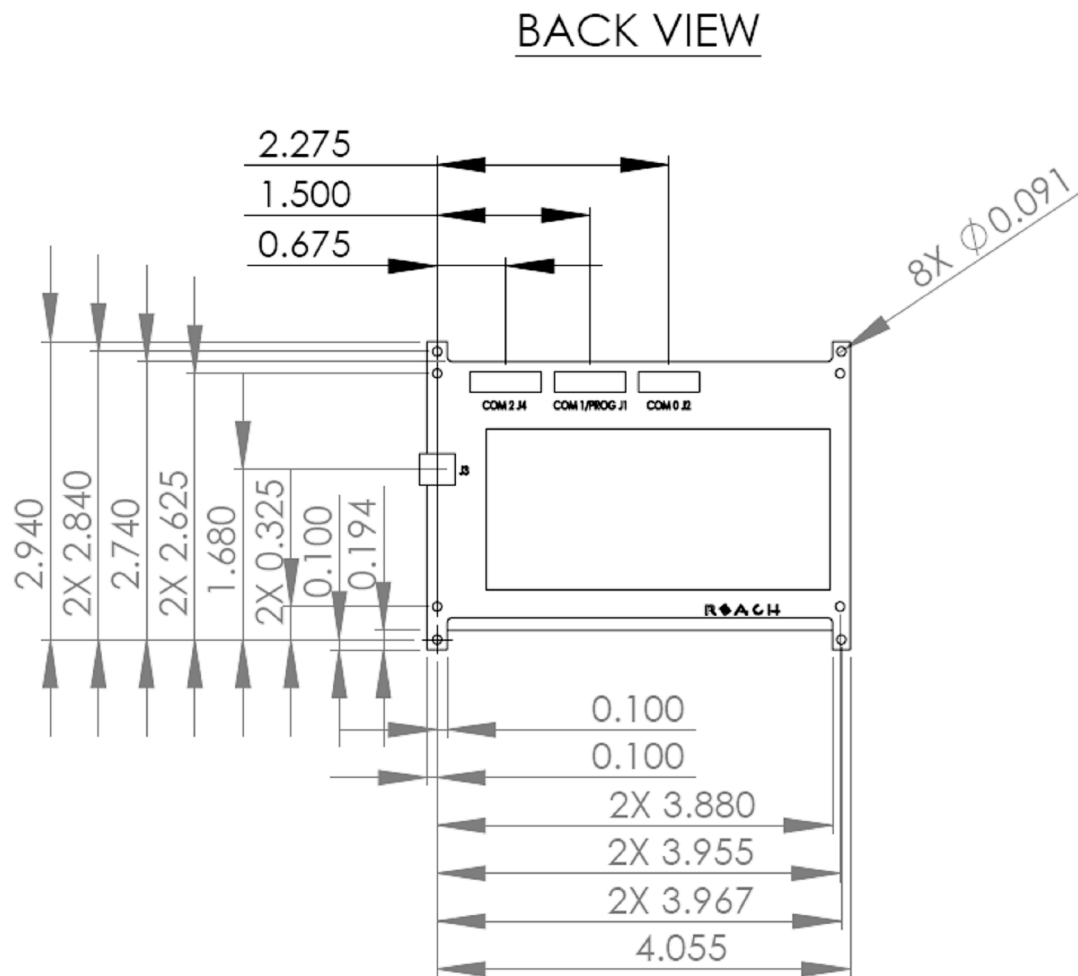


Figure 2: Board Physical Dimensions (inches)

**1.5. SLCD43H Board Picture**



**Figure 3: SLCD43H Board Image**

### 1.6. SLCD43H Board Dimensional Drawing (Revision H01)

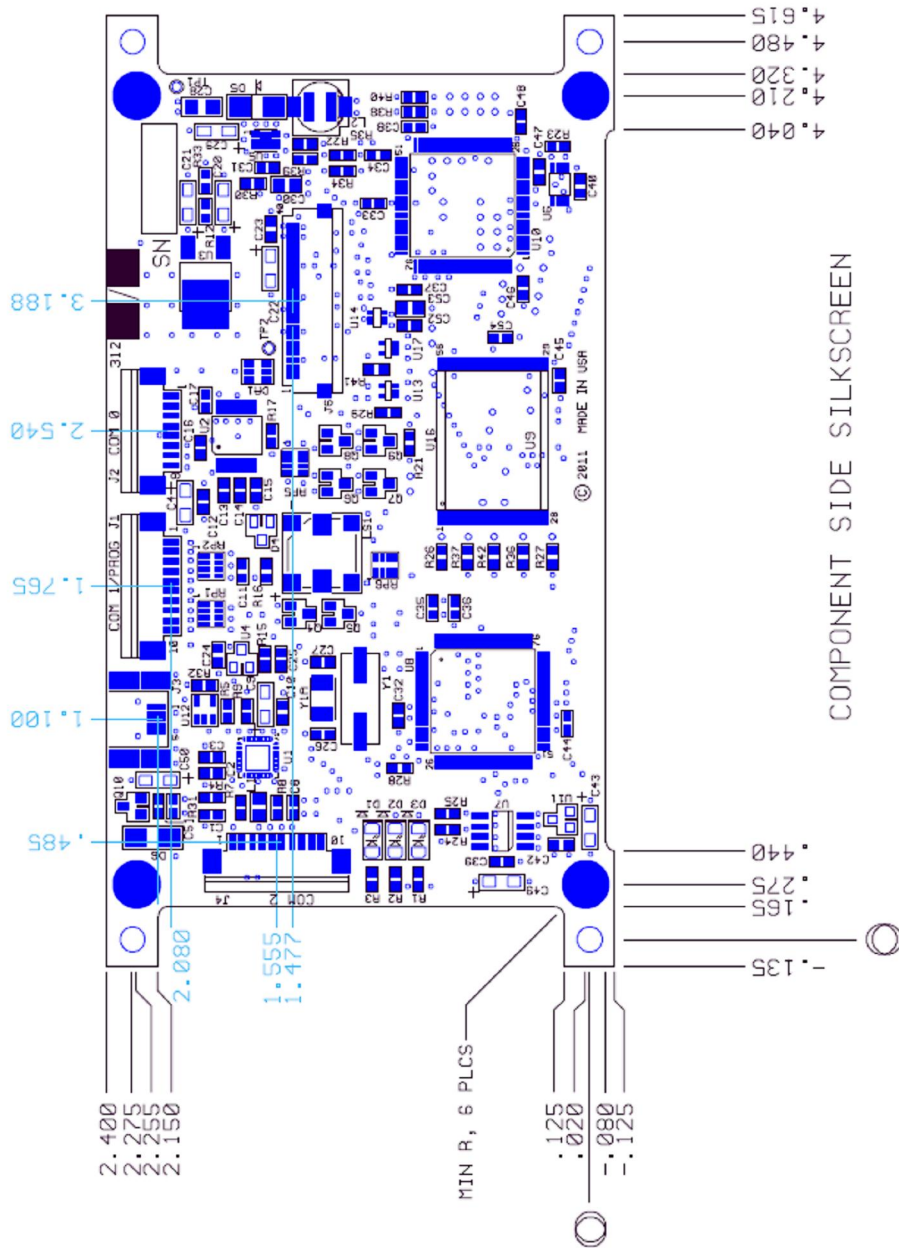


Figure 4: SLCDH Board Physical Dimensions (inches)

## 1.7. SLCD43 Board Dimensions

| <i>Measurement</i>                                     | <i>Dimension</i> |
|--|------------------|
| Width, to end of USB connector                         | 4.235" / 107.6mm |
| Length   | 3.040" / 77.2mm  |
| Total Height (bottom of board to top of USB connector) | 0.220" / 5.58mm  |

## 1.8. Electrical Characteristics

The standard SLCD43 board requires 5V DC. Please consult Reach for options to run at 3.3V and lower power modes for battery operation.

Current draw is as follows:

| <i>Configuration</i>                              | <i>Typical<br/>A @ 5V</i> | <i>Max. A<br/>@ 5V</i> |
|---|---------------------------|------------------------|
| SLCD43 controller board, 5v power, beeper on max  | 0.130                     | 0.182                  |
| SLCD43 controller board, 5v power, beeper off     | 0.065                     | 0.091                  |
| SLCD43 controller board, USB power, beeper on max | 0.145                     | 0.203                  |
| SLCD43 controller board, USB power, beeper off    | 0.080                     | 0.112                  |

## 1.9. Environmental

The standard SLCD43 controller is rated for commercial temperature operation of -20°C to 70°C. This is the same temperature range as the supported 4.3" panels. Contact Reach for extended temperature requirements.

## 2. System Overview

### 2.1. General - SLCD43 controller

The SLCD43 plus attached LCD touch panel acts as a "smart terminal" and is generally connected to a "host" processor that implements the desired Graphical User Interface (GUI). The host can be any kind of processor from an eight bit microcontroller to a PC. The host issues commands to the SLCD43 and receives button press responses from the SLCD43. In this manual, the term "host" is used to describe the device connected to the SLCD43.

Note that the can also work with panels that do not have a touch screen. In this case, the touch-related commands are not used.

The SLCD43 board contains flash memory that is used for bitmap and macro storage. (This is sometimes referred to as "external" flash to distinguish it from the processor's internal flash memory that stores the SLCD43 processor firmware.) A bitmap is equivalent to a Windows "bmp" file and it is a rectangular image. Bitmaps, the BMPload program used to store these into the SLCD43, and macros which are a stored command sequence are all described in the SLCD Command Reference Manual.

The SLCD43 is connected to the host processor via a serial port. The SLCD43 has 3 separate serial ports plus a USB/Serial device port. There are several reasons for having multiple ports:

- a) Host program development and debugging. One port is connected to the host and another to a PC. The PC is used to download images and macros that the host uses. The two ports allow both the host and PC to be connected without having to switch cables. The PC can also be used for interactive command execution / testing.
- b) The SLCD43 supports serial pass-through via the "aout" and "ain" commands. This allows serial peripherals to be attached to the SLCD43 and accessed by the host. This is useful for systems where all serial ports are in use and an existing serial-attached device can be moved over to an SLCD43 serial port.

## 2.2. Overview - SLCD43 Development Kits

The SLCD43 is available in a development kit form that includes a "production module" (SLCD43 board plus attached display). In the kit it comes pre-loaded with bitmaps and macros that implement a demo. The demo runs if the unit is powered on with the main communications port looped back transmit to receive. This loopback is affected via a jumper on the "PowerCom4" board. The demo macro is #1. See the SLCD Command Reference Manual for information on macros.

The SLCD43 board in the development kit has panel-specific hardware and firmware options loaded. In general, it is not advised to use a Development kit board to drive a different panel. Though it seems like this should not be an issue if the connectors look like they match, there are many details that can cause a panel not to work. Unfortunately there is no standard pinout for these panels, even when the connectors have the same number of pins.

The development kit includes a two-port DB9 interface board that makes it easier to set up a development environment. One port can be used to download bitmaps from a PC while the other connects to the "host" computer. The SLCD43 also has a USB device port that can be used to connect it to a PC.

### 2.2.1. Getting Started

The SLCD43 kit as shipped contains a demo that allows you to verify its functionality. Plug the supplied power supply into the barrel connector on the triangular shaped PowerCom 4 board. The display should light up and lead you through various touch-activated screens.

Note that the demo is pre-loaded into the flash memory, and includes both bitmap files and a macro file. To best learn how the SLCD43 board and this kit works, start with simple commands using the serial interface and leave the creation and use of macros for later. Appendix G of the SLCD Command Reference manual provides a short tutorial.

A video tutorial on using the SLCD43 kit can be found on the Reach Web site [www.reachtech.com](http://www.reachtech.com). Click on "Video Library".

### 2.2.2. Connecting the kit to a PC - Serial or USB

The kit should be connected to a PC so that the serial command interface can be experimented with. This is a preliminary step before the unit is connected to the embedded system that will control the display in the embedded system. **PLEASE NOTE: In order**



***to communicate over the main serial port, the Demo jumper JP1 on the PowerCom4 board must be removed.*** This jumper loops back transmit to receive on the serial port and this is what tells the display to run the demo.

The SLCD43 Rev B board can be powered entirely through the USB port. Before using the USB port, download and install the VCOM (Virtual COM port) drivers from FTDI [here](#). The chip on the SLCD43 is the FT232R. The driver should be installed before the USB port is plugged into the PC.

As shipped, all serial ports including USB are set to 115,200 baud, 8 bit, 1 start, 1 stop, no parity. Connect the PC using a straight through cable to the DB9 marked "MAIN" (P1). If the PC does not have a serial port, use the SLCD43 USB port.

A USB-to-serial adapter cable can also be used. ***Note: the Belkin USB-serial adapter has software compatibility issues and is not recommended; Reach recommends either Prolific or FTDI chip based adapters.***

Once connected, use HyperTerminal or similar terminal emulator to send and receive commands from the kit. HyperTerminal has limitations that can cause problems; specifically, some versions cannot send the "escape" character. We recommend ProComm Plus from Symantec, or RealTerm (shareware). ProComm has the advantage of being able to run scripts which can simulate the user interface on the SLCD43 using a PC.

### ***2.2.3. Developing the application GUI with an embedded controller as host***

To develop the host-driven GUI, connect the SLCD43 main port to the host and any of the other ports to a PC. This way either the host or the PC can drive the SLCD. Typically the PC is used to experiment and determine what command is needed for a graphical element, and to download new bitmaps and macros without having to disconnect the embedded system.

The SLCD43 has a console "autoswitch" feature that allows any serial port to be used as the main control port. Only one SLCD43 port is the active or "main" port at any time. However, when any other port receives three <return> characters in a row, it auto switches to become the main port. This way, the PC can take control of the SLCD43 communications channel and send commands or download new bitmaps. The reset button, \*RESET command, or a power cycle restores the previously active main port.

[Note: the \*prevCons command will also restore the previously active main port. Also, the control port autoswitch character is <return> by default but can be set to a different value with the \*auxEsc command. See the SLCD Command Reference Manual]



The SLCD43 has non-volatile memory which remembers which port is the "main" control port. This allows any of the SLCD43 serial/USB ports to be the main port on power-on. See the SET CONTROL PORT command.

### 2.3. PowerCom4 Board

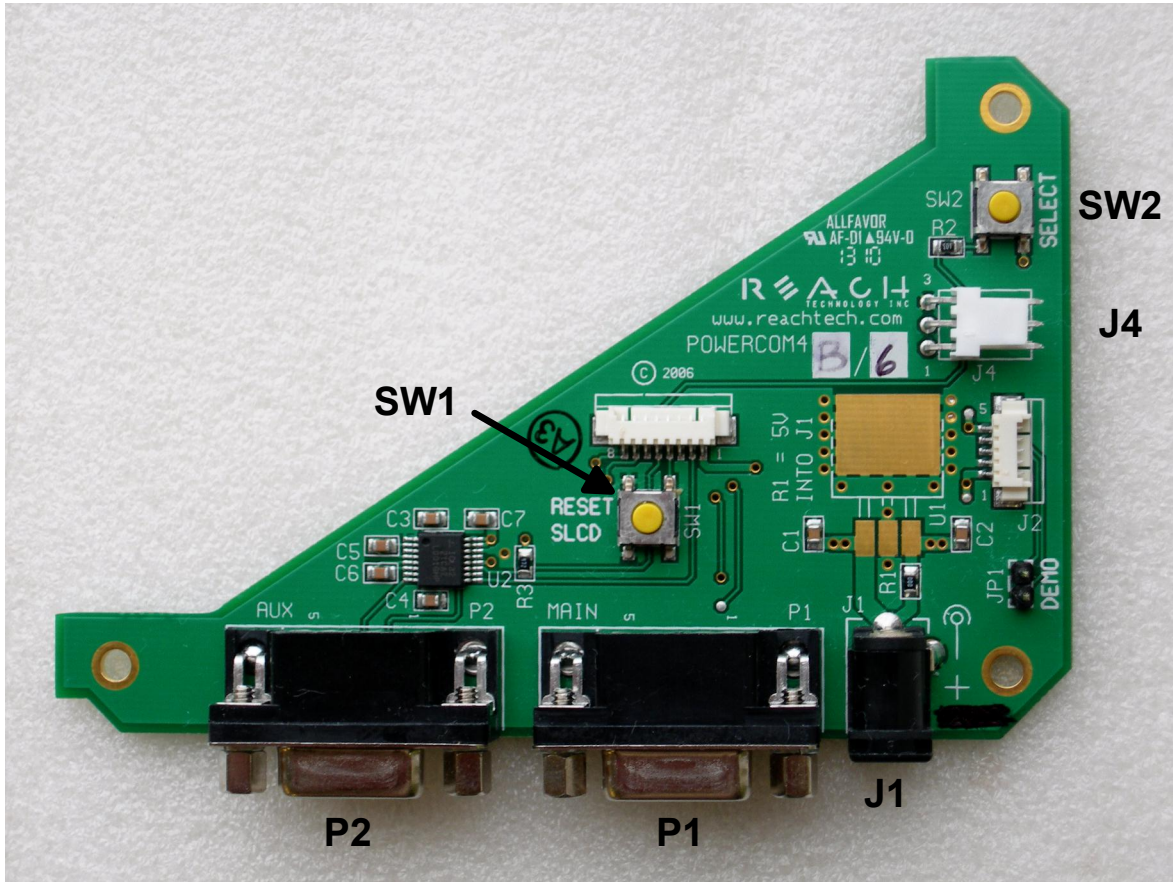


Figure 5: PowerCom4 Board Image

## 2.4. PowerCom4 Schematic

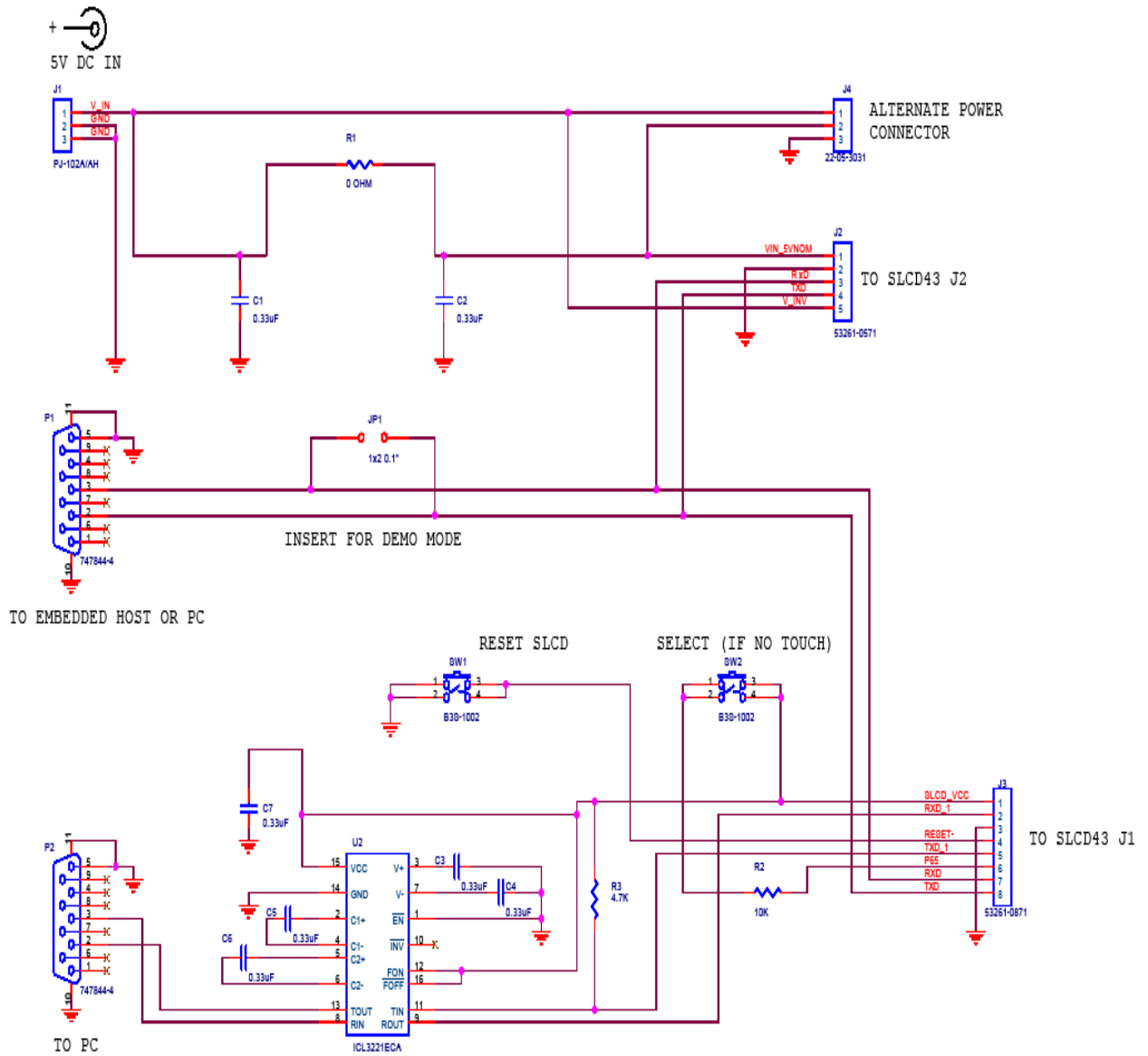
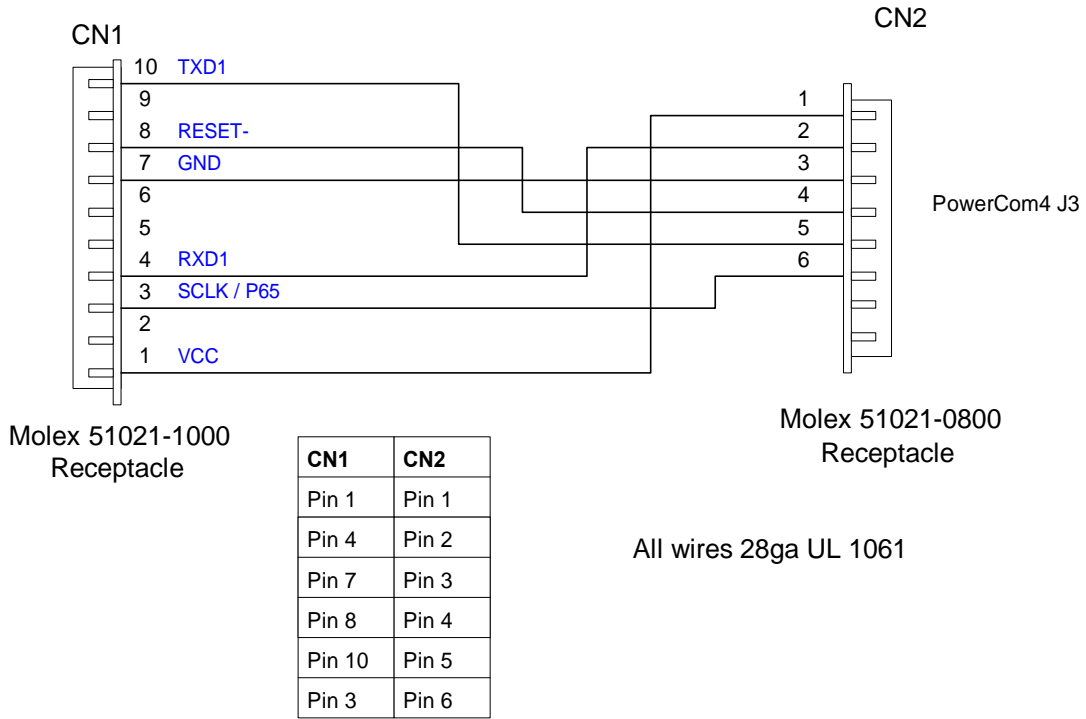
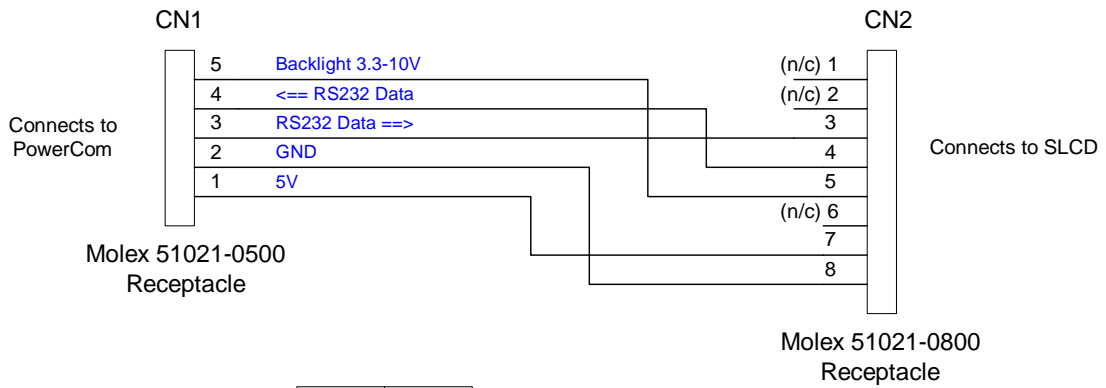


Figure 6: PowerCom4 Schematic

## 2.5. PowerCom4-SLCDx Cable Pinouts



**Figure 7: Cable #23-0101 Diagram**



**Figure 8: Cable #23-0064 Diagram**

## 2.6. Kit / PowerCom4 Operational Notes

1. The unit default baud rate is 115200. The unit does not echo characters (for communications efficiency), so you must select "echo characters locally" or "half duplex" in your PC communications program. Also, all return strings are terminated by a <return> only, so you need to specify "add line feed to line return" as well.
2. The demo requires a certain set of bitmaps to be loaded. These are loaded as part of the kit. If these are not present, it will not run correctly. Copies of these are provided in the "BMPs and Macros" directory on the CD provided. Use the BMPload program and load the demo.lst and macros.mac files to restore the demo.
3. The SW1 "RESET" button on the PowerCom4 board resets the SLCD43 processor and performs the equivalent of a power-on reset.
4. The SW2 "SELECT" button on the PowerCom4 board is intended for use with kits that don't have a touch screen, and is not implemented on a standard kit.
5. Jumper JP1 is the "DEMO" serial loopback jumper that is installed at the factory in order to automatically run the demo at power up. Remove the jumper prior to attempting serial communications with SLCD43 controller.
6. The J1 barrel connector is the external power supply connector for the development kit. With the SLCD43, the power supply is 5VDC input and the barrel connector is 2.5mm center pin positive.
7. PowerCom4 connector J2 provides the communications path for the P1 "MAIN" RS232 serial port. It connects to J2 of the SLCD43 controller via cable 23-0064. This connection also provides 5VDC power to the SLCD43 controller.
8. Connector J3 of the PowerCom4 board is the communications path for the P2 "AUX" RS232 serial port. It connects to J1 of the SLCD43 controller via the 23-0101 cable. This provides the path for the "RESET", and "SELECT" signal buttons. As well as the communications path for downloading of bitmaps and macros to the SLCD43 controller.
9. Connector J4 is reserved for future use.

## **2.7. LED indicators**

The SLCD43 board has Three LEDs to indicate operational status.

D1 shows USB activity.

D2 is lit while the SLCD43 is executing a command or running a looping macro. It is useful to determine the activity level of the SLCD

D3 turns on when power is applied and the microcontroller is operating correctly. It can also be turned off and on via the SET LED command.

## **3. Configuration Guide**

### **3.1. Power**

The SLCD43 requires 5VDC power. See Section 4 for connector pinouts. Power is applied to connector J2 which also contains the COM0 serial interface.

### **3.2. Serial**

The SLCD43 has three serial ports. Any of them can be used to send commands to the board.

The physical interface options are as follows:

- COM0 - RS232 (or factory option for 3.3V CMOS levels).
- COM1 - 3.3V CMOS level signaling with RTS handshaking for an external transceiver such as RS485.
- COM2 - 3.3V CMOS level signaling (Revision B board only).
- COM3 - USB (looks like a serial port to the host PC)

By default, all serial communications is 115200 baud, 8 data bits, no parity, with 1 stop bit, and receive flow control via XON / XOFF. This can be changed by using a `power-on` macro which is described in the Command Reference manual.

### **3.3. TFT Panel Orientation**

The SLCD43 firmware is available in landscape or portrait modes. The ordering part number contains the firmware revision, which specifies the orientation.

### **3.4. Grounding**

The SLCD43 mounting holes are connected to digital ground. These must also be connected to Chassis ground either directly or through a transient protection diode for ESD. The touch circuit has ESD protection that shorts ESD on the touch panel to board mounting hole ground.

#### 4. Connectors

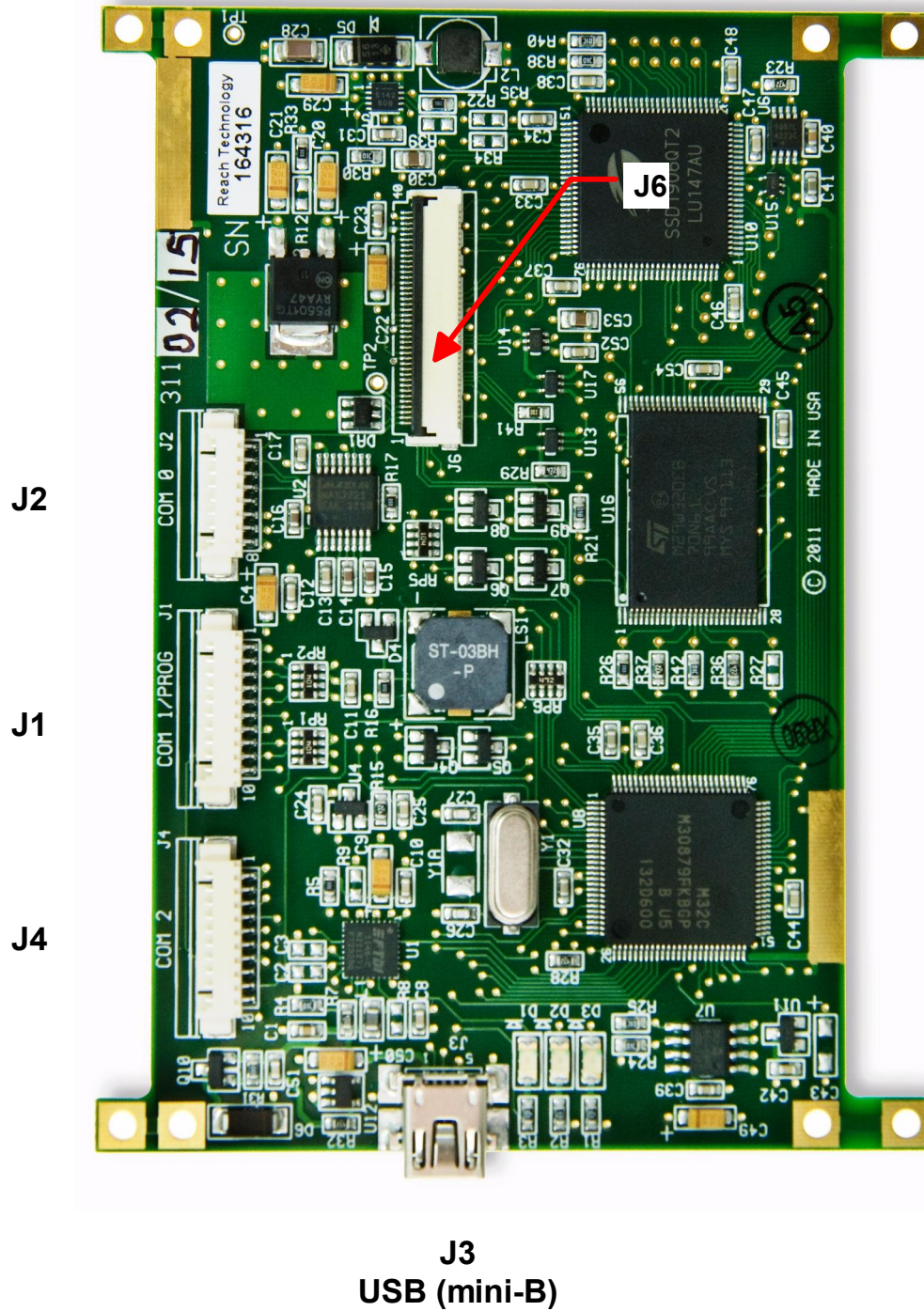


Figure 9: SLCD43 Connector Locations (Rev H01, H02, B)



#### 4.1. J2 - Power and COM0 RS232 communications (COM 0 Connector)

J2 – 8-Pin Molex 53261-0871 for Power and Communications

| Pin | RS232 Mode – R17 installed on board       |
|-----|---|
| 1   | do not connect                            |
| 2   | do not connect                            |
| 3   | RS232 input * (ESD protected)             |
| 4   | RS232 output (ESD protected)              |
| 5   | 5V DC input <sup>+</sup> , Backlight only |
| 6   | GND (power and communications)            |
| 7   | 5V DC input**, BOARD_VIN, General Power   |
| 8   | GND (power and communications)            |

\* RS232 input valid only if R17 installed as zero ohms.

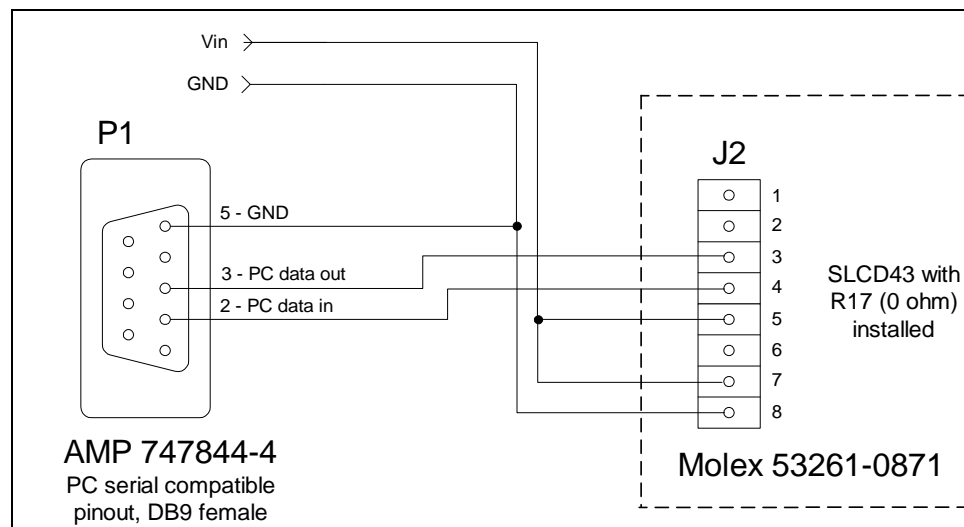
This is the factory default.

<sup>+</sup> If R33 is removed can be used for battery operation input of 3.3-10V. The battery power will then be input to a Micrel 40V PWM Boost Regulator(MIC2297) driving the backlight. (Revision B only)

\*\* See Appendix F.2 for 3.3V option.

For ESD protection details, refer to the specifications of the ICL3222E transceiver chip.

Typical connection from a PC is as follows:



#### 4.2. J6 - Flat Flex LCD Connector (LCD Connector)

J6 – 40-Pin Omron XF2M-4015-1A or equivalent 0.5mm pitch Zero-Insertion-Force Connector

| <i>Pin</i> | <i>Signal</i>           | <i>Pin</i> | <i>Signal</i> |
|------------|-------------------------|------------|---------------|
| 1          | Y Up                    | 21         | Green 7       |
| 2          | X Left                  | 22         | Green 6       |
| 3          | Y Down (Y Bot?)         | 23         | Green 5       |
| 4          | X Right                 | 24         | Green 4       |
| 5          | GND                     | 25         | Green 3       |
| 6          | Test Point 2            | 26         | Green 2       |
| 7          | Data Enable (NC on FFC) | 27         | Green 1       |
| 8          | Vsync                   | 28         | Green 0       |
| 9          | Hsync                   | 29         | Red 7         |
| 10         | PON                     | 30         | Red 6         |
| 11         | Pixel Clock             | 31         | Red 5         |
| 12         | GND                     | 32         | Red 4         |
| 13         | Blue 7                  | 33         | Red 3         |
| 14         | Blue 6                  | 34         | Red 2         |
| 15         | Blue 5                  | 35         | Red 1         |
| 16         | Blue 4                  | 36         | Red 0         |
| 17         | Blue 3                  | 37         | LCD VCC       |
| 18         | Blue 2                  | 38         | GND           |
| 19         | Blue 1                  | 39         | LED Cath +    |
| 20         | Blue 0                  | 40         | LED Anode -   |

*NOTE: the panel pin numbering is reversed due to top vs. bottom contact*

#### 4.3. J3 – USB (USB Connector)

This connector is a mini-USB type which connects to an FTDI FT232R USB-to-Serial bridge chip. To use this port, download the VCP (Virtual Com Port) drivers at:

[www.ftdichip.com/Drivers/VCP.htm](http://www.ftdichip.com/Drivers/VCP.htm)

J3 – Molex 54819-0572

| <i>Pin</i> | <i>Signal</i> |
|------------|---------------|
| 1          | VBUS          |
| 2          | D-            |
| 3          | D+            |
| 4          | n/c           |
| 5          | GND           |

#### 4.4. J1 – COM1 / Programming Header (COM 1/PROG Connector)

This connector is used *either* for updating the firmware of the SLCD, *or* for communicating using the COM1 serial port. It also has a hardware reset signal for the SLCD43 processor. (For firmware update, use the Reach P/N 42-0056 USB programmer.)

J1 – 10 Pin Molex 53261-1071

| <b>Pin</b> | <b>Signal</b>  |
|------------|--|
| 1          | VCC (3.3V) ó can be used to power external transceiver               |
| 2          | DE (active high) ó use if needed to enable external 422 / 485 driver |
| 3          | Do not use   |
| 4          | RxD1 ó Com1 input  |
| 5          | Do not use   |
| 6          | Do not use   |
| 7          | GND  |
| 8          | RESET- input; drive low to hardware reset the SLCD43 processor       |
| 9          | Do not use   |
| 10         | TxD1 ó Com1 output   |

#### 4.5. J4 – Processor Expansion Header (COM 2 Connector)

This connector is used for expanding the processor functionality to support additional features. Contact Reach technical support for specific applications.

J4 – 10 Pin Molex 53261-1071

| <b>Pin</b> | <b>Signal</b>   |
|------------|---|
| 1          | Directly connected to J2-7 (BOARD_VIN). Can be used as board power to as a pass-through to power an external circuit board. |
| 2          | I2C Data/Address  |
| 3          | I2C Clock   |
| 4          | RxD3 (input) COM2   |
| 5          | Expansion I/O   |
| 6          | EXPWM - expansion PWM or GPIO   |
| 7          | GND   |
| 8          | RESET- (pull low to GND via switch or open drain to reset)  |
| 9          | SPKO ó 0V-BOARD_VIN square wave audio signal for external audio amplifier.  |
| 10         | TxD3 (output) COM2  |

#### 4.6. J1 and J4 Electrical Specifications

Electrical specifications for J1 and J4 signals: DE, RxD1, RESET, TxD1, I2C Data, I2C Clock, RxD3, Expansion I/O, EXPWM, RESET, TxD3.

|                     |               |                     |
|---------------------|---------------|---------------------|
| Input voltage       | -0.3 / VCC+.3 | Absolute Min / Max  |
| Input voltage       | 0.8xVCC       | High min            |
| Input voltage       | 0.2xVCC       | Low max             |
| Output current High | 1mA           | Min, Vout = 0.9xVCC |
| Output current Low  | -1mA          | Min, Vout = 0.1xVCC |

## 5. Software Command Reference

The software commands and utilities are described in a separate document, the SLCD Command Reference Manual.

## Appendix A - Panels compatible with the SLCD43 controller

The SLCD43 controller is available in two main option configurations:

- a) Standard, using Innolux 4.3" WQVGA panels (model AT043TN24). Backlight current is 20ma.
- b) High-brightness, using SGD 4.3" high-brightness WQVGA panels (model GVTY43SPBB1R0). Backlight current is 40ma.

Please contact Reach Sales at 510-770-1417 [sales@reachtech.com](mailto:sales@reachtech.com) for ordering part numbers and for specific panel compatibility and support.

## Appendix B - Parts and suppliers for SLCD43 controller connections

### B.1 *Connectors and cables for J1, J4, J2*

The board connectors for J1, J4 and J2 are Molex type 53261-1071 (J1, J2) and 53261-0871 (J2). The mating connector is made of two parts: a receptacle housing and crimp pins. A special tool is needed to make the crimps. Alternatively, custom cables can be purchased. See [B.2](#) for cable vendors.

J2 Receptacle housing Molex P/N 51021-0800

J1 Receptacle housing Molex P/N 51021-1000

Crimp pins Molex 50079 or 50058

Prototype (small qty) crimp tool Molex 63811-0200

Production crimp tool Molex 63811-0000

All of the above are available from [www.digikey.com](http://www.digikey.com)

### B.2 *Discrete wire cable vendors*

The cables needed for J1 and J2 can be specified and supplied as assembled cables by:  
[www.intcomptech.com](http://www.intcomptech.com)

## Appendix C - Ordering information

### C.1 Contact Reach directly for ordering information.

Reach Technology Inc  
4575 Cushing Parkway  
Fremont, California 94538  
(510) 770-1417

## Appendix D - Troubleshooting

### D.1 *Touch unreliable or non-operative*

If the touch screen is unreliable or non-operative, do the following:

1. Run the TOUCH CALIBRATE command, "tc". This will reset the calibration values and allow you to recalibrate the touch screen.
2. If after doing this the touch is still non-operative, check the cable connection into the SLCD43 board.

To determine the accuracy and sensitivity of the touch, you can use the "debug" command as follows:

```
*debug 1<return>
```

This puts an "X" on the screen whenever a valid touch is recognized. To turn off, use:

```
*debug 0<return>
```

## Appendix E – 3.3V CMOS UART Interface

It is generally recommended that the RS232 interface be used to communicate with the SLCD43. The advantages are the ability to remote the display from the host, and easier debugging by spying on the RS232 interface. However, in retrofit situations, an RS232 port may not be available.

There are two options to connect to the SLCD43 via UART at 3.3V CMOS levels:

### E.1 COM2 via J4.

The connector J4 has power, ground, reset-, and UART TxD and RxD. This is the easiest way to connect at 3.3V CMOS levels. The BMPload program can be used to set COM2 as the active main port.

### E.2 COM0 via J2.

The SLCD43 serial port COM0 is typically used for communication using RS232 levels. However, by removing resistor R17, it can use 3.3V CMOS logic levels. This is typically a factory option, but the user may make this change as needed. R17 is located under U2 which is under connector J2.

#### COM0 Logic Level Mode:

1. Resistor R17 (below U2) must be removed.

With R17 removed, connector J2 **must** be wired for Logic Level Mode:

J2 – 8 Pin Molex 53261-0871 for Power and Communications

| <b>Pin</b> | <b>Logic level mode – R17 not installed</b> |
|------------|---|
| <b>1</b>   | TxD- output from the SLCD43                 |
| <b>2</b>   | RxD- input to SLCD43 *                      |
| <b>3</b>   | do not connect                              |
| <b>4</b>   | do not connect                              |
| <b>5</b>   | 5V Input                                    |
| <b>6</b>   | GND (power and communications)              |
| <b>7</b>   | 5V Input                                    |
| <b>8</b>   | GND (power and communications)              |

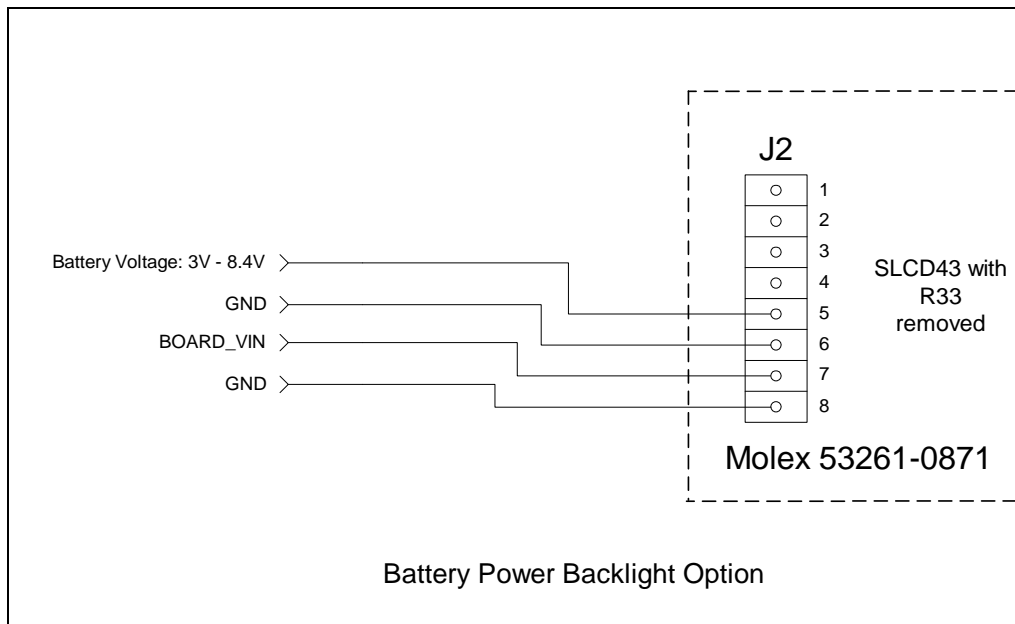
- \* R17 must be removed to avoid conflict with RS232 on-board receiver.

## Appendix F – Battery Operation Options

### F.1 *Running the backlight directly from the battery.*

When the SLCD43 is used with a battery supplying the power, efficiency is important for long battery life. The largest power drain when operating is the backlight. Driving the backlight directly from the battery without going through a DC-DC converter can help. (This assumes a max battery voltage of under 10V). To do this:

1. Remove resistor R33 that shorts J2 pin 5 and J2 pin 7
2. Supply 3.3-10V from the battery to J2 pin 5. This directly drives the backlight up-converter.



**Figure 10: Battery Power Diagram**



## **F.2 *Running the board from 3.3V instead of 5V.***

The SLCD43 generates its own 3.3V supply via a linear regulator. Powering the board with 3.3V will save  $1.7/5 = 34\%$  power compared to 5V. To do this, the LDO is shorted and the diode that allows the unit to be powered from the USB port (5V) is removed. Once this change has been made, the board cannot be powered from the USB port.

To do this:

1. Add zero ohm resistor, size 0805 to location R12
2. Remove diode D6
3. Supply 3.3V to J2-7 instead of 5V.

Contact Reach for other power saving options.

## Appendix G – SLCD43 Controller Board Part Number Information

| <i>Part Number</i> | <i>Description</i>   |
|--------------------|--|
| 42-0311-01         | Innolux 400 nit  |
| 42-0311-11         | Innolux 400 nit with SS disabled ( <i>not intended for new designs</i> )         |
| 42-0311-21         | Innolux 400 nit with 3.3v power option   |
| 42-0311-31         | SGD 800 nit  |
| 42-0311-41         | SGD 800 nit with 3.3v power option   |
| 42-0311-02         | Innolux 400 nit with improved ESD immunity                                       |
| 42-0311-12         | Innolux 400 nit with SS disabled and improved ESD immunity (not for new designs) |
| 42-0311-22         | Innolux 400 nit with 3.3v power option and improved ESD immunity                 |
| 42-0311-32         | SGD 800 nit and improved ESD immunity  |
| 42-0311-42         | SGD 800 nit with 3.3v power option and improved ESD immunity                     |

## Appendix H – SLCD43 Display Module Current Draw

Current draw is as follows:

| <i>Configuration</i>                             | <i>Typical A @ 5V</i> | <i>Max. A @ 5V</i> |
|--|-----------------------|--------------------|
| SLCD43/Innolux, backlight on full, beeper on max | 0.319                 | 0.385              |
| SLCD43/Innolux, backlight on full, beeper off    | 0.224                 | 0.250              |
| SLCD43/Innolux, backlight on low, beeper off     | 0.103                 | 0.130              |
| SLCD43/SGD, backlight on full, beeper on max     | 0.315                 | 0.362              |
| SLCD43/SGD, backlight on full, beeper off        | 0.263                 | 0.289              |
| SLCD43/SGD, backlight on low, beeper off         | 0.102                 | 0.128              |

## Appendix I – SLCD43 Board History Information

### I.1 40-pin Rev H01 Board Picture (42-0311-01)



Figure 11: SLCD43 40-pin Revision H01 Board Image

## I.2 45-pin Board Picture (Rev B)



Figure 12: SLCD43 45-pin Revision B Board Image

### I.3 45-pin Board Picture (Rev A)

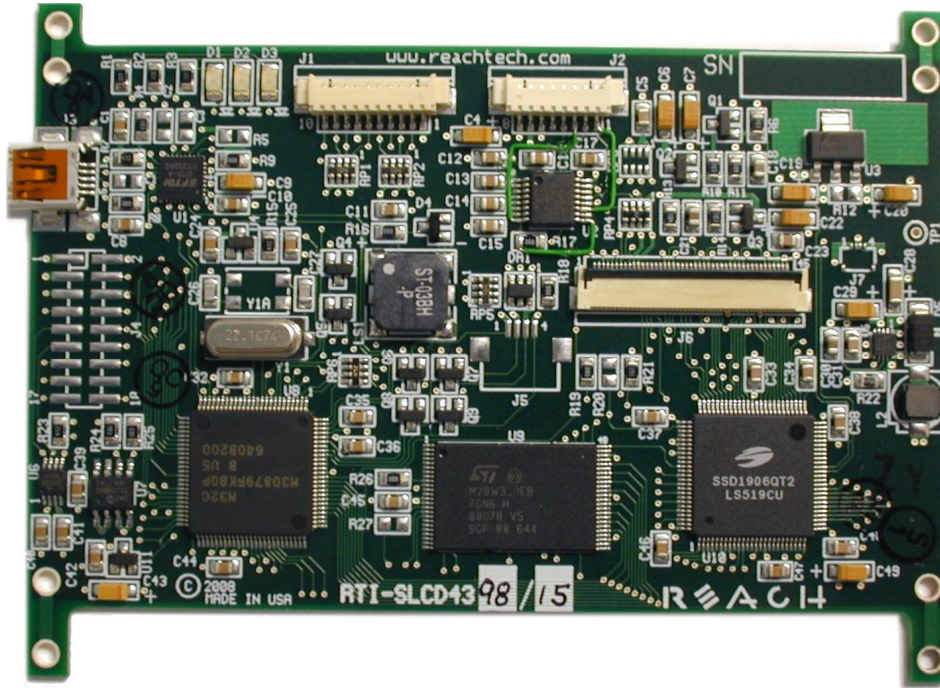


Figure 13: SLCD43 45-pin Revision A Board Image

### I.4 45-pin Board Dimensional Drawing (Rev A)

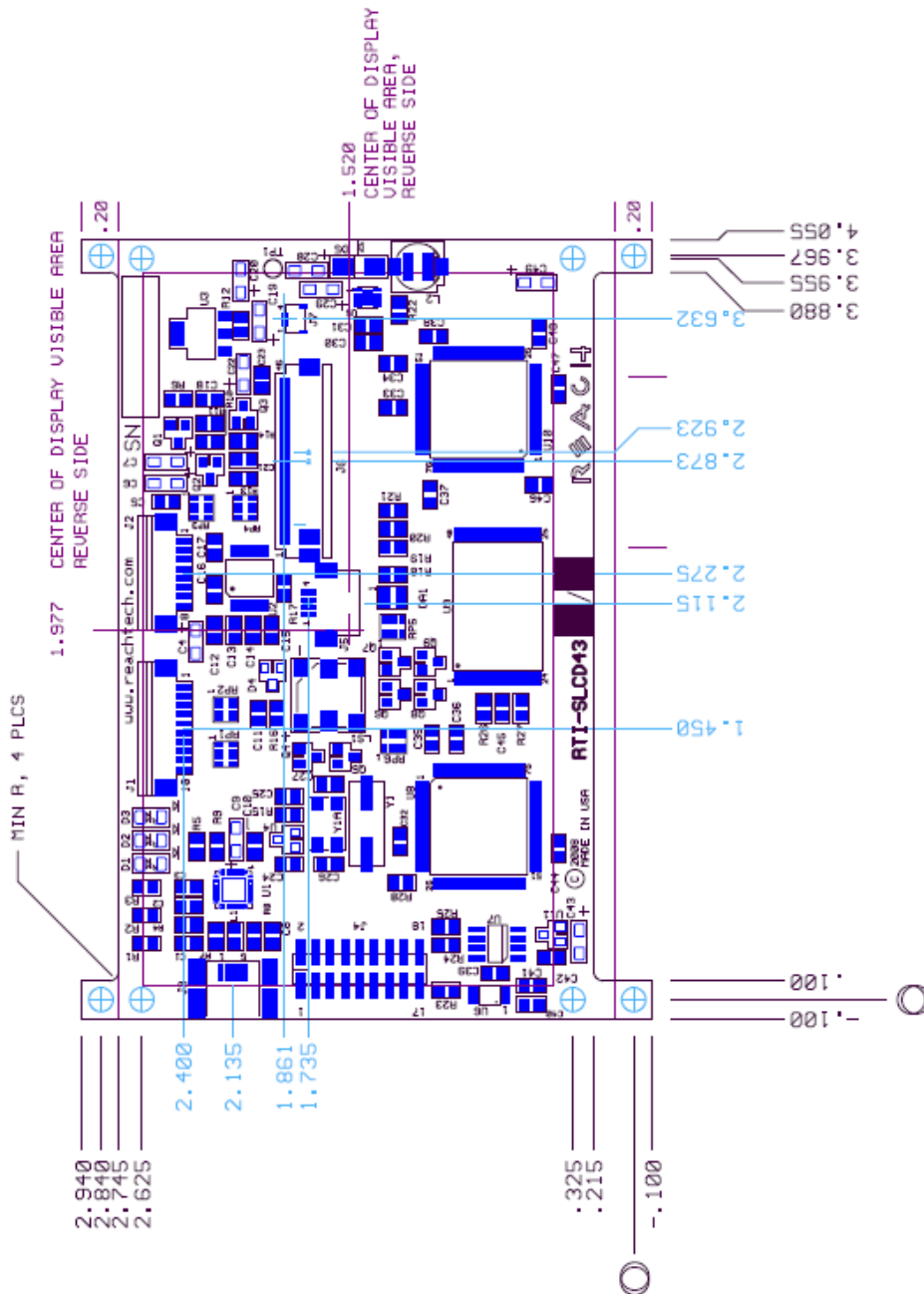


Figure 14: Revision A Board Physical Dimensions (inches)

## I.5 Legacy Connectors

### I.5.1 J5 – 4 Wire Touch (TOUCH Connector)

This connector is installed if the SLCD43 is used with the Sharp 4.3 inch display or similar.

J5 – 4 Pin Molex 52207-0460 or equivalent 1mm pitch bottom contact ZIF Connector

| <i>Pin</i> | <i>Signal</i> |
|------------|---------------|
| <b>1</b>   | X Right       |
| <b>2</b>   | Y Down        |
| <b>3</b>   | X Left        |
| <b>4</b>   | Y Up          |

*Note: touch calibration can accommodate swap between right and left, and / or up and down.*

### I.5.2 J6 – 45-pin Flat Flex LCD Connector (LCD Connector)

Location J6 has a 45 pin or a 40 pin connector installed; the 45 pin is for the LB043 or similar panels and the 40 pin is for the LQ043 or similar panel.

J6 – 45 Pin Omron XF2H-4515-1LW or equivalent 0.5mm pitch Zero-Insertion-Force Connector  
(40 Pin Omron XF2H-4015-1LW or equivalent 0.5mm pitch Zero-Insertion-Force Connector)

| <i>Pin</i>     | <i>Signal</i>  | <i>Pin</i>     | <i>Signal</i> |
|----------------|----------------|----------------|---------------|
| <b>1</b>       | NC             | <b>24 (19)</b> | Blue 1        |
| <b>2</b>       | NC             | <b>25 (20)</b> | Blue 0        |
| <b>3</b>       | LED +          | <b>26 (21)</b> | Green 7       |
| <b>4</b>       | LED -          | <b>27 (22)</b> | Green 6       |
| <b>5</b>       | GND            | <b>28 (23)</b> | Green 5       |
| <b>6 (1)</b>   | X Right        | <b>29 (24)</b> | Green 4       |
| <b>7 (2)</b>   | Y Down         | <b>30 (25)</b> | Green 3       |
| <b>8 (3)</b>   | X Left         | <b>31 (26)</b> | Green 2       |
| <b>9 (4)</b>   | Y Up           | <b>32 (27)</b> | Green 1       |
| <b>10 (5)</b>  | GND            | <b>33 (28)</b> | Green 0       |
| <b>11 (6)</b>  | Power Sel      | <b>34 (29)</b> | Red 7         |
| <b>12 (7)</b>  | Data Enable    | <b>35 (30)</b> | Red 6         |
| <b>13 (8)</b>  | LCD FP (Vsync) | <b>36 (31)</b> | Red 5         |
| <b>14 (9)</b>  | LCD LP (Hsync) | <b>37 (32)</b> | Red 4         |
| <b>15 (10)</b> | PON            | <b>38 (33)</b> | Red 3         |
| <b>16 (11)</b> | Pixel Clock    | <b>39 (34)</b> | Red 2         |
| <b>17 (12)</b> | GND            | <b>40 (35)</b> | Red 1         |
| <b>18 (13)</b> | Blue 7         | <b>41 (36)</b> | Red 0         |
| <b>19 (14)</b> | Blue 6         | <b>42 (37)</b> | LCD VCC       |
| <b>20 (15)</b> | Blue 5         | <b>43 (38)</b> | LCD VCC       |
| <b>21 (16)</b> | Blue 4         | <b>44 (39)</b> | GND           |
| <b>22 (17)</b> | Blue 3         | <b>45 (40)</b> | GND           |
| <b>23 (18)</b> | Blue 2         |                |               |

*NOTE: the panel pin numbering is reversed due to top vs. bottom contact*

### ***1.5.3 J7 – LED Backlight Output***

**J7 – 4 Pin Hirose FH19C-4S-0.5H(05)**

| <b><i>Pin</i></b> | <b><i>Signal</i></b> |
|-------------------|----------------------|
| <b>1</b>          | LED Backlight +      |
| <b>2</b>          | NC                   |
| <b>3</b>          | NC                   |
| <b>4</b>          | LED Backlight -      |

This connector is installed if the SLCD43 is used with the Sharp 4.3 inch display.