

5.7" Prime View Display Module

This module make integration easy. Each unit comes with an LCD, controller board, backlight driver, and touch screen, integrated and ready to go. The module form factor is designed to ensure long-term product availability.

The 5.7-inch Prime View unit features:

- High-brightness TFT panel.
- High-efficiency LED backlighting.
- Available with or without resistive touch screen.
- USB connectivity for additional flexibility.
- Two RS232 serial ports, one 3.3V CMOS serial port.
- LCD conforms to an industry standard form factor specifically chosen for multi-sourced long lifetime availability.
- Steel bracket makes display easy to mount.
- Powered by the SLCD6 controller.

Get Started with a Development Kit

To get started with a 5.7-inch development kit order product number 52-0101-11 which includes module, cables, sample images, sample code, power supply, and technical support.

Visit our, "How can I get stated?" webpage, call 510-770-1417, or email sales@reachtech.com for more information or to order.

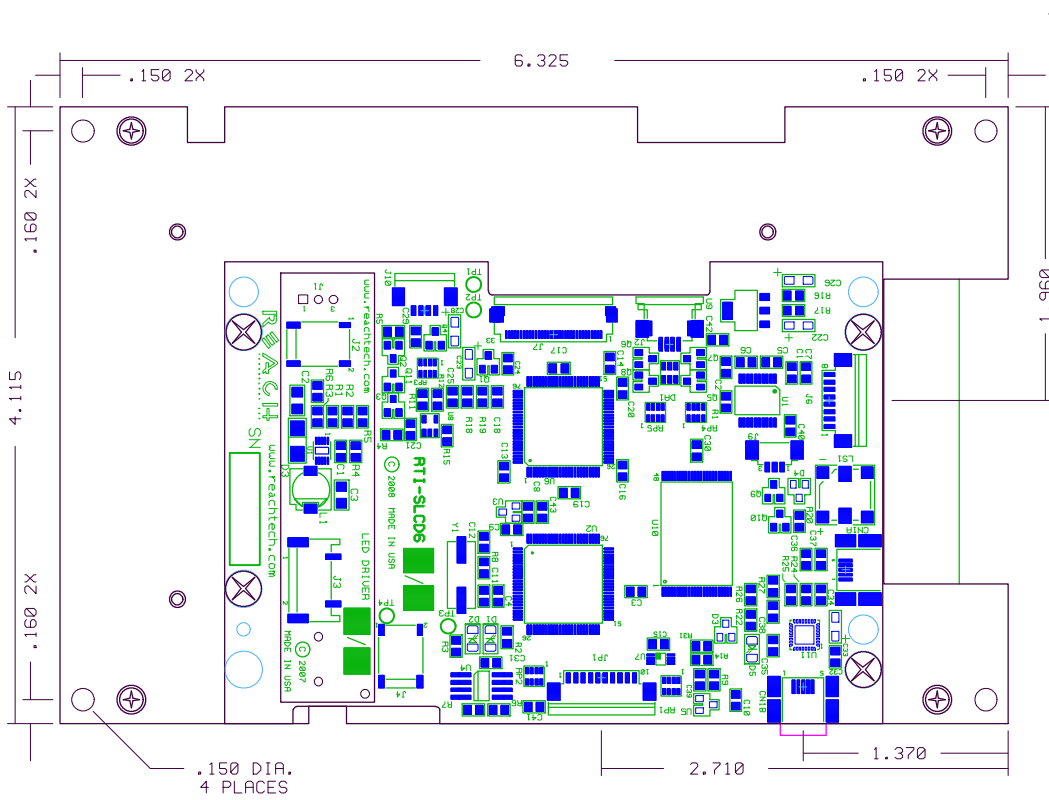


Product Specifications

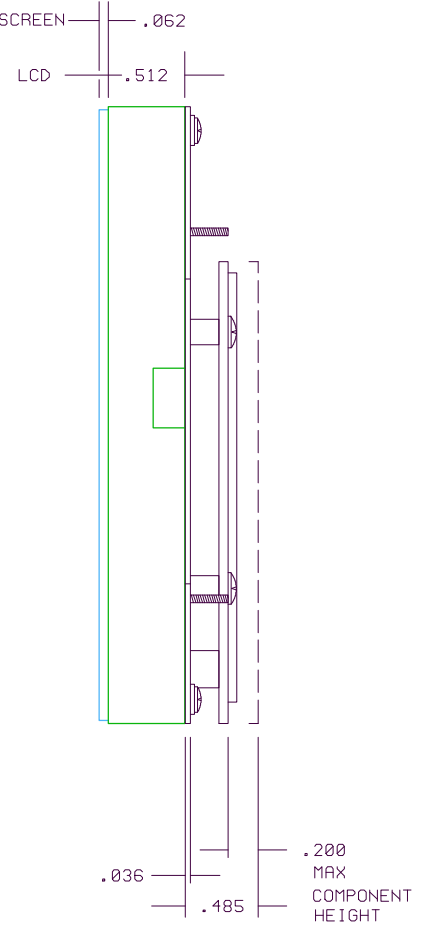
Product Part Number	51-0101-11
Reach Board Model	SLCD6
Display Manufacturer	Prime View
Display Size and Type	5.7" TFT
Colors	256/65,536
Display Viewing Area (mm)	86.4 (H) x 115.2 (W)
Horizontal Viewing Angle (degrees)	120 (typ.)
Vertical Viewing Angle (degrees)	50 (Top) 40 (Bottom) (typ.)
Screen Resolution	320x240
Screen Type	QVGA
Display Brightness (cd/m2)	560 (typ.), with touch
Touch Panel Type	Resistive
Operating Temperature	-20°C to 70°C
Storage Temperature	-40°C to 70°C
Supply Voltage	5VDC±10%
Power Requirement	850mA max.
Interface Connector	Molex 53261 series
Serial Interface	RS232 / 3.3V CMOS
Backlight Display	LED
Number of Serial Ports	3
USB Port	Yes
SD Card Slot	No
Microprocessor	16/32 bit CISC
Flash Memory	4MB
RoHS	Yes

5.7" Prime View Module Physical Dimensions

BACK VIEW



SIDE VIEW



FRONT VIEW

