

## 4.3” LG Phillips Display Module

This module makes integration easy. Each unit comes with an LCD, controller board, backlight driver, and touch screen, integrated and ready to go. The module form factor is designed to ensure long-term product availability.

The 4.3-inch LG Phillips unit features:

- Competitive pricing for a popular LCD size (used by top portable gaming systems, GPS navigation, and other hand-held devices).
- Good for hand held applications.
- Light, slim, and thin (LED backlight).
- Suitable for battery operation.
- Can be powered by USB connection.
- Available with or without resistive touch.
- One RS232 serial port, two 3.3V CMOS serial ports, plus a USB device port.
- LCD conforms to industry standard form factor specifically chosen for multi-sourced long lifetime availability.
- Powered by the SLCD43 controller.
- High-brightness Sharp panel option available.

See mechanical drawings on page two. For panel specifications, controller and software reference manuals, and other resources visit the Reach Download Center ([www.reachtech.com/support/downloads/](http://www.reachtech.com/support/downloads/)).

### Get Started with a Development Kit

To get started with a 4.3” development kit order product number 52-0006 which includes module, cables, sample images, sample code, power supply, and technical support.

Visit our, “How can I get stated?” webpage, call 510-770-1417, or email [sales@reachtech.com](mailto:sales@reachtech.com) for more information or to order.



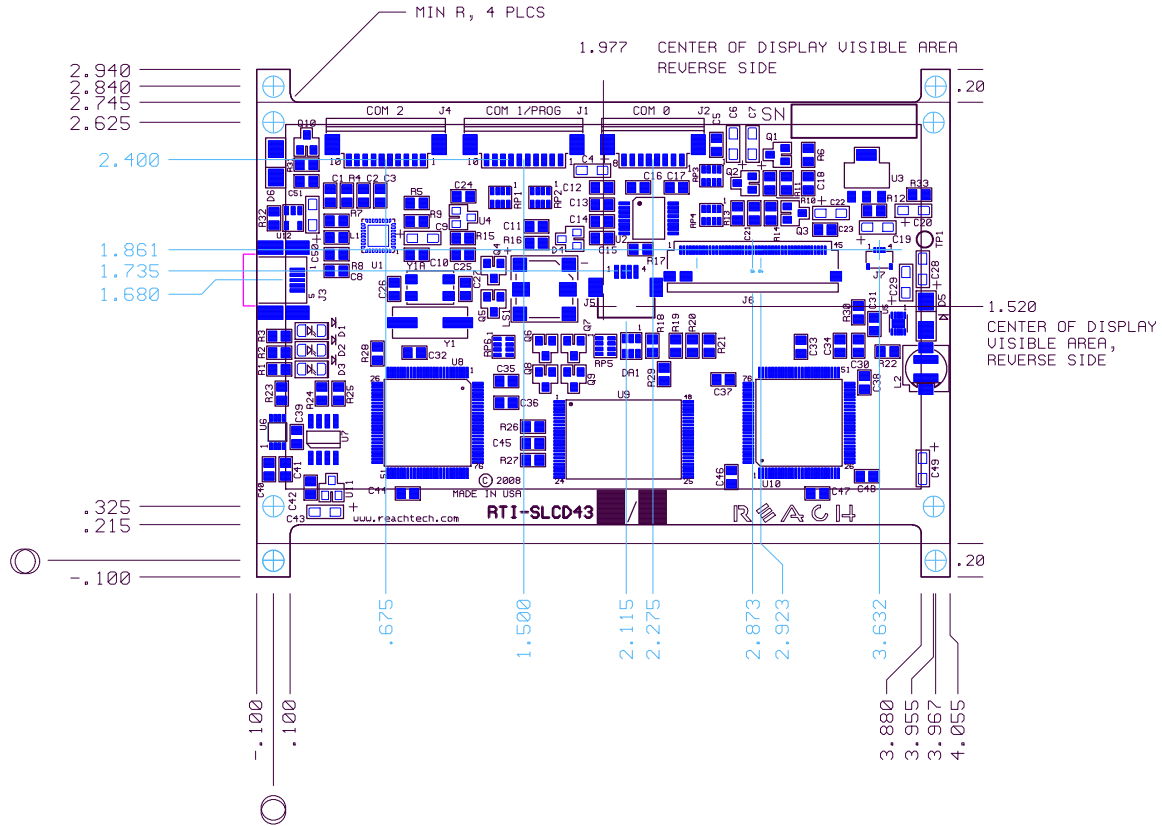
4.3-inch LG Phillips Display Module front view

### Product Specifications

|                                           |                             |
|-------------------------------------------|-----------------------------|
| <b>Product Part Number</b>                | 51-0007                     |
| <b>Reach Board Model</b>                  | SLCD43                      |
| <b>Display Manufacturer</b>               | LG Phillips                 |
| <b>Display Size and Type</b>              | 4.3” TFT                    |
| <b>Colors</b>                             | 65,536                      |
| <b>Display Viewing Area (mm)</b>          | 53.9 (H) x 95.0 (W)         |
| <b>Horizontal Viewing Angle (degrees)</b> | 130 (typ.)                  |
| <b>Vertical Viewing Angle (degrees)</b>   | 60 (Top) 50 (Bottom) (typ.) |
| <b>Screen Resolution</b>                  | 480x272                     |
| <b>Screen Type</b>                        | WQVGA                       |
| <b>Display Brightness (cd/m2)</b>         | 350* (typ.), with touch     |
| <b>Touch Panel Type</b>                   | Resistive                   |
| <b>Operating Temperature</b>              | -20°C to 70°C               |
| <b>Storage Temperature</b>                | -30°C to 70°C               |
| <b>Supply Voltage</b>                     | 5VDC±10%                    |
| <b>Power Requirement</b>                  | 450mA max.                  |
| <b>Interface Connector</b>                | Molex 53261 series          |
| <b>Serial Interface</b>                   | RS232 / 3.3V CMOS           |
| <b>Backlight Display</b>                  | LED                         |
| <b>Number of Serial Ports</b>             | 3                           |
| <b>USB Port</b>                           | Yes                         |
| <b>SD Card Slot</b>                       | No                          |
| <b>Microprocessor</b>                     | 16/32 bit CISC              |
| <b>Flash Memory</b>                       | 4MB                         |
| <b>RoHS</b>                               | Yes                         |

\*High brightness option available.

## SLCD43 Board (Revision B) Physical Dimensions



## SLCD43 Board and Panel Side View

