



5.7-inch front view

Module Specifications

Product Number: 51-0001
 Reach Board Model: SLCD6
 Display Manufacturer: Prime View
 Display Type: TFT
 Colors: 256/65,536
 Display Viewing Area (mm): 86.4(H) x 115.2(W)
 Portrait Mode Option: Yes
 Horizontal Viewing Angle (degrees): 120 (typ.)
 Vertical Viewing Angle (degrees): 50 (Top) 40 (Bottom) (typ.)
 Screen Resolution: 320x240 (QVGA)
 Display Brightness (cd/m²): 560 (typ.), with touch
 Contrast Ratio: 600:1 (typ.)
 Touch Panel Type: Resistive
 Operating Temperature: -20°C to 70°C
 Storage Temperature: -40°C to 70°C
 Supply Power: 5VDC±10% 850mA max.
 Interface Connector: Molex 53261 series
 Serial Interface: RS232 / 3.3V CMOS
 Backlight Display: LED
 Number of Serial Ports: 3
 USB Port: Yes
 Flash Memory: 4MB
 RoHS: Yes

See mechanical drawings on page two for physical dimensions.

5.7-inch color touch display module provides high brightness and ease of use

The 5.7-inch module features a high brightness, wide viewing angle TFT panel with high efficiency LED back-lighting. The steel mounting bracket makes the display easy to mount, and the display's standard form factor enhances supply longevity.

The module comes complete with controller board, LCD, and touch screen. Reach's display module technology and simple-to-use programming tools make GUI interface and integration easy. This helps reduce time-to-market and development costs.

The 5.7-inch module is perfect for industrial and medical control surfaces. It is available with or without touch, and outdoor readable anti-reflective protection options are available.

Get fast results with a low-risk development kit.

The 5.7-inch kit (product number 52-0002) contains everything you need to get a touch interface up and running in a matter of days. Kit includes cables, sample images, sample code, power supply, and technical support.

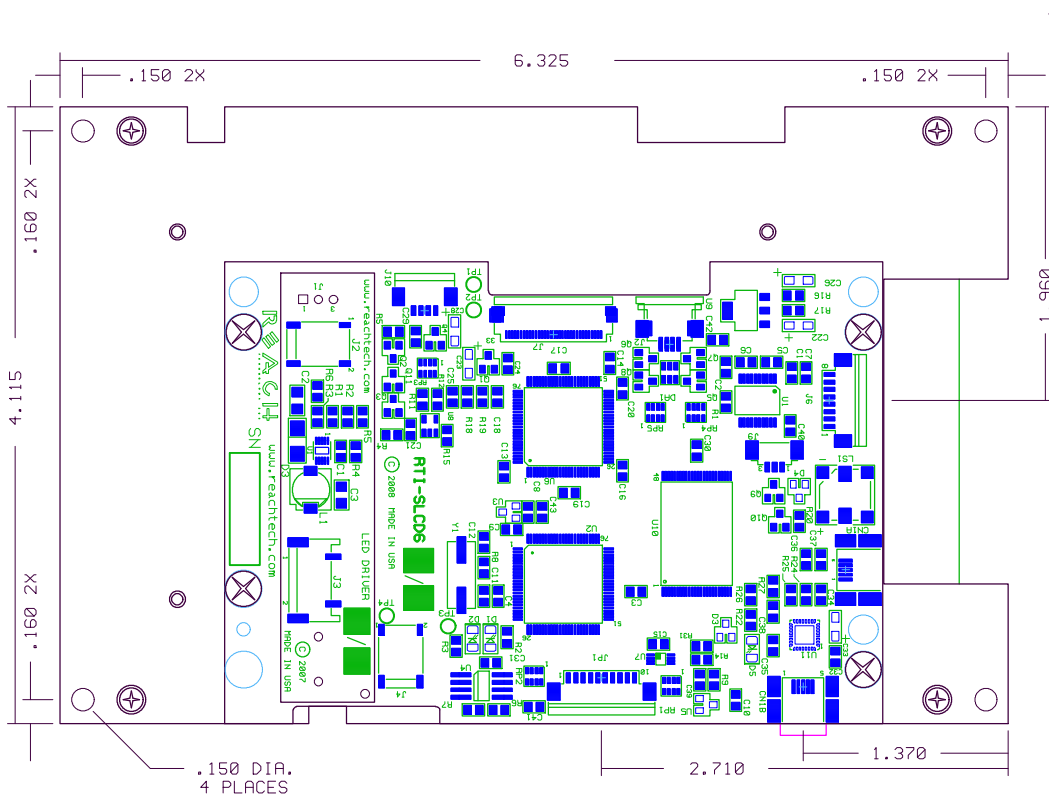
Call sales at 510-770-1417 or email sales@reachtech.com for more information or to order.



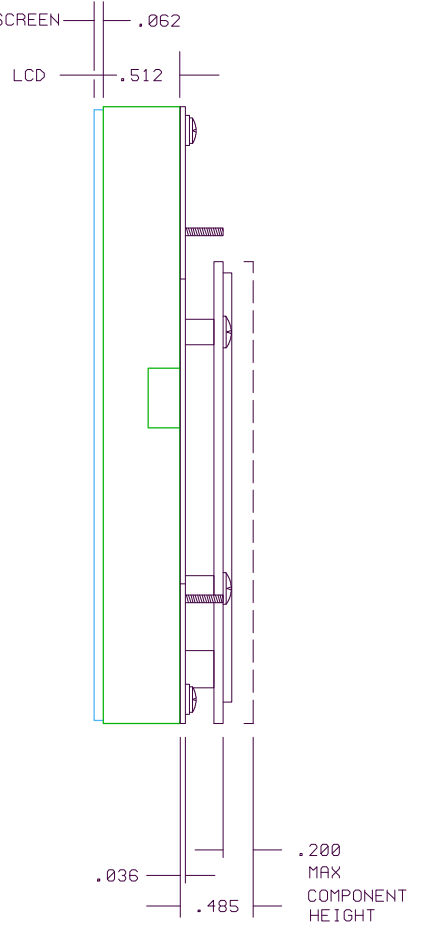
5.7-inch rear view

5.7" Prime View Module Physical Dimensions

BACK VIEW



SIDE VIEW



FRONT VIEW

